

DRAWING NUMBER
53/31

31

PLAT NO. II-A

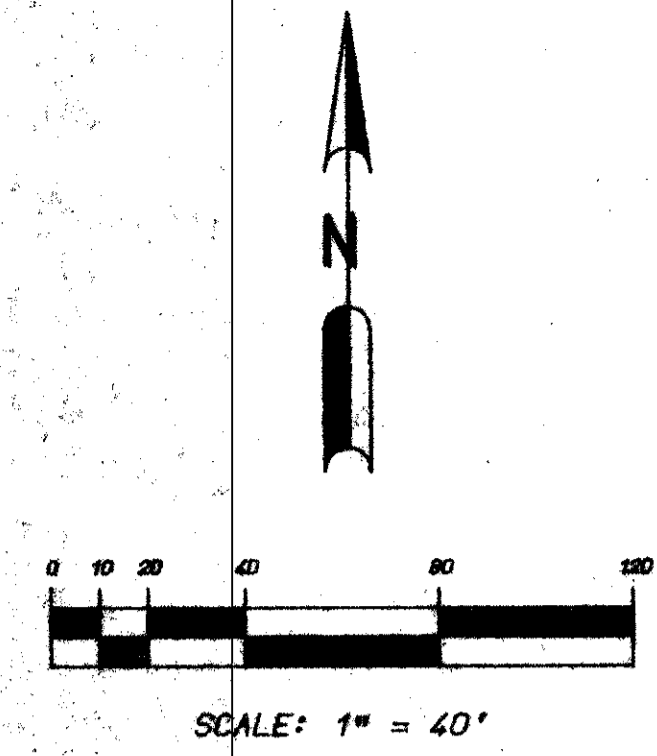
LAKES OF DELRAY

BEING A PORTION OF THE NORTHWEST ONE - QUARTER
OF SECTION 23, TOWNSHIP 46 SOUTH, RANGE 42 EAST
PALM BEACH COUNTY, FLORIDA

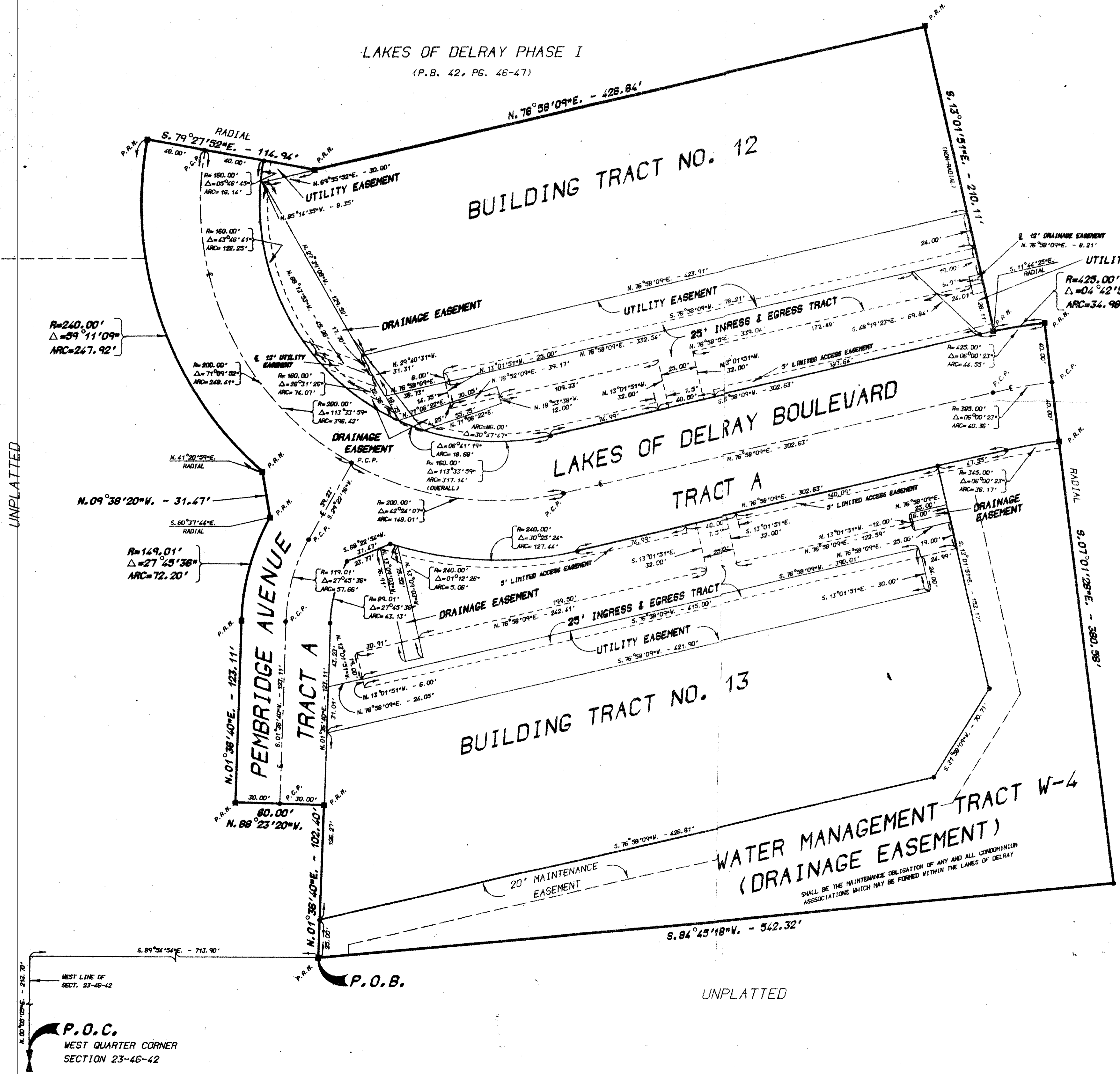
JULY, 1985

SHEET 2 OF 2 SHEETS

THIS INSTRUMENT PREPARED BY:
MICHAEL T. KOLODZIEJCZYK P.L.S. 3864 STATE OF FLORIDA
LAWSON & NOBLE, INC.
ENGINEERS - PLANNERS - SURVEYORS
LAKE WORTH, FLORIDA



LAKES OF DELRAY PHASE I
(P.B. 42, PG. 46-47)



SURVEYOR'S NOTES:

- 1.) ALL P.R.M.'s BEAR THE REGISTRATION NUMBER 3864 SHOWN THUS - ■ P.R.M.
- 2.) PERMANENT CONTROL POINTS SHOWN THUS - ● P.C.P.
- 3.) THE BEARINGS SHOWN HEREON ARE BASED ON A BEARING OF N.00°05'05"E. ON THE WEST LINE OF SEC. 23-46-42 PER THE PLAT OF LAKES OF DELRAY - PLAT NO. ONE AS RECORDED IN PLAT BOOK 42, PGS. 46 AND 47, PUBLIC RECORDS OF PALM BEACH COUNTY, FLORIDA.
- 4.) BUILDING SETBACK LINES SHALL BE AS REQUIRED BY PALM BEACH COUNTY ZONING REGULATIONS.
- 5.) NO BUILDINGS OR ANY KIND OF CONSTRUCTION SHALL BE PLACED ON UTILITY OR DRAINAGE EASEMENTS. THERE SHALL BE NO TREES OR SHRUBS PLACED ON UTILITY EASEMENTS WHICH ARE PROVIDED FOR WATER AND SEWER USE OR UPON DRAINAGE EASEMENTS. LANDSCAPING ON OTHER UTILITY EASEMENTS SHALL BE ALLOWED ONLY AFTER CONSENT OF ALL UTILITY COMPANIES OCCUPYING SAME.
- 6.) ALL DRAINAGE EASEMENTS ARE 12' WIDE UNLESS OTHERWISE NOTED.

LAKES OF DELRAY
53/31
0267-003

DRAWING NUMBER

DRAWING NUMBER

DRAWING NUMBER

PLAN HOLD CORPORATION • IRVINE, CALIFORNIA
REORDER BY NUMBER 07548

PLAN HOLD CORPORATION • IRVINE, CALIFORNIA
REORDER BY NUMBER 07548

PLAN HOLD CORPORATION • IRVINE, CALIFORNIA
REORDER BY NUMBER 07548

P.O.C.
WEST QUARTER CORNER
SECTION 23-46-42

UNPLATTED